

Normal Fetal Ultrasound

6:26: Fetal Head Anatomy

3:57 Normal Fetal Facial Anatomy

5:21: Fetal Skeletal Anatomy

54 Sec: Fetal Lung Ultrasound

Twin Gestation: Normal and Abnormal

Derivation of Twins

2:55. Twin-To-Twin-Transfusion Syndrome

Fetal Doppler and Measurement of Cervical Length

2:19: Doppler: Umbilical Artery

1:24: Middle Cerebral Artery Doppler

8:02: Measurement of Cervical Length

Abnormalities of the Placenta

2:26: Placenta Accreta (Morbidly Adherent Placenta)

7.08: Vasa Previa

Ultrasound of Abruptio Placenta

Uterine Myomas and Endometrium: Normal and Abnormal

Ultrasound of Uterine Myomas

Measurement of the Endometrium, & Menstrual Cycle

Endometrial Polyps, Submucosal Myomas, Hyperplasia, Adenocarcinoma

Endometrial: Adhesions, Fluid, Trophoblastic Disease, IUDs

Abnormalities of the Ovary and Adnexa

Ovarian Cysts

Hemorrhagic Cysts, Endometrioma, Dermoid Cysts, Myomas

Polycystic Ovarian Disease, Ovarian Hyperstimulation, Adnexal Torsion

Hydrosalpinx, Tubo-Ovarian Abscess, Peritoneal Inclusion Cysts

Anterior Abdominal Wall Defects

Gastroschisis

Omphalocele

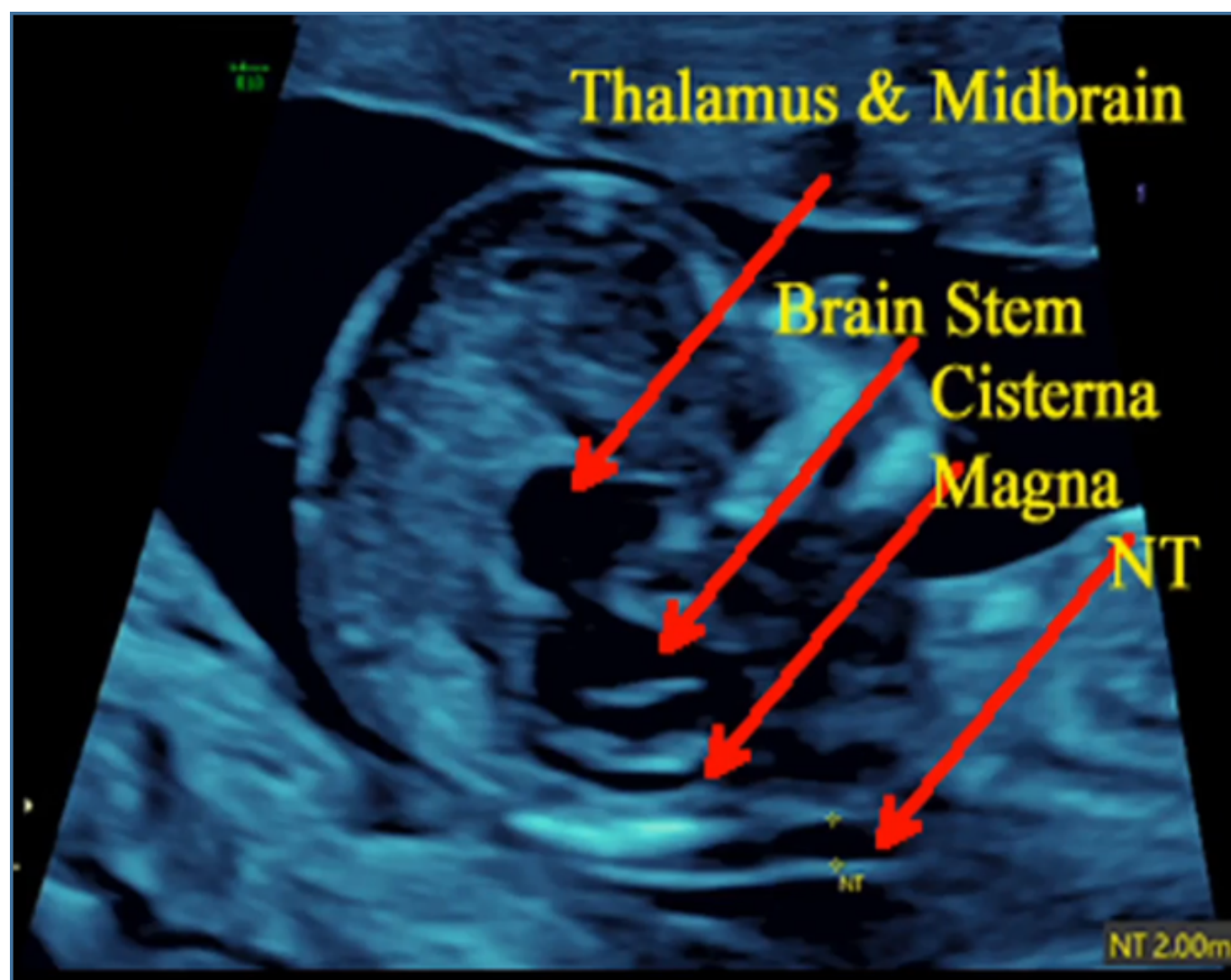
Pentalogy of Cantrell

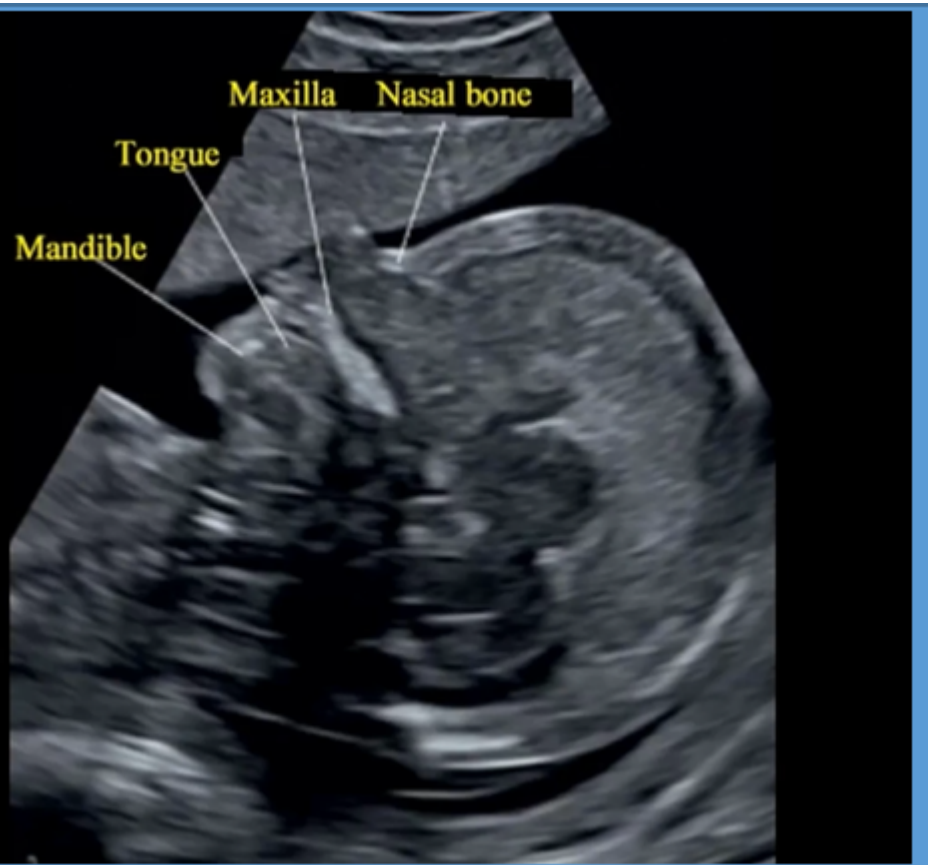
Anterior Abdominal Wall Defects: Differential Diagnosis

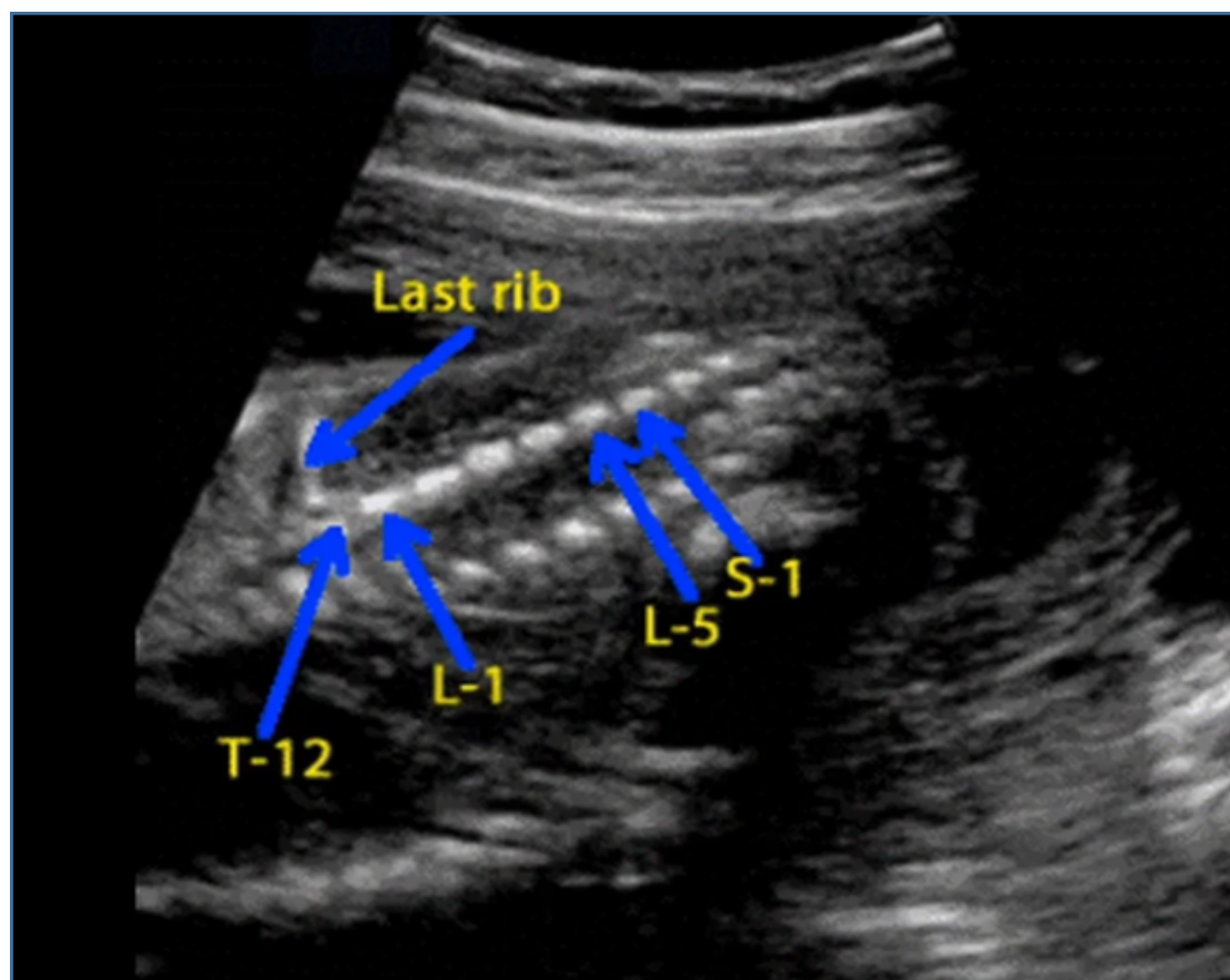
Central Nervous System Defects

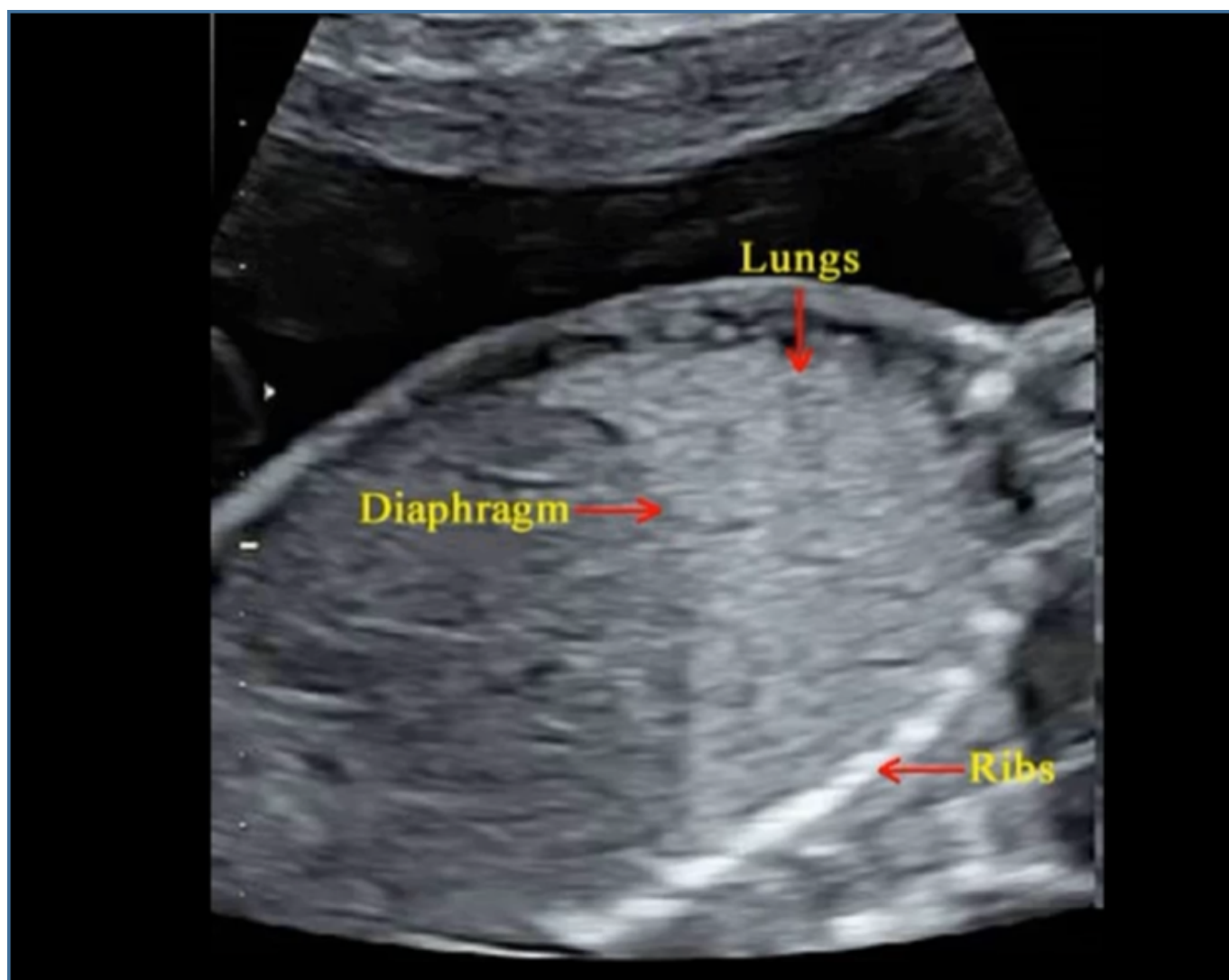
Fetal Encephalocele

Normal Videos: Fetal Anatomy

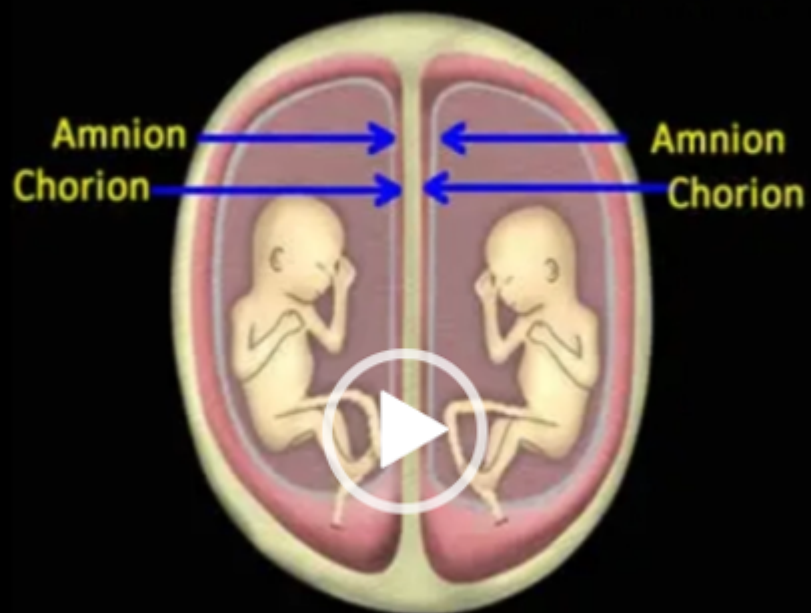


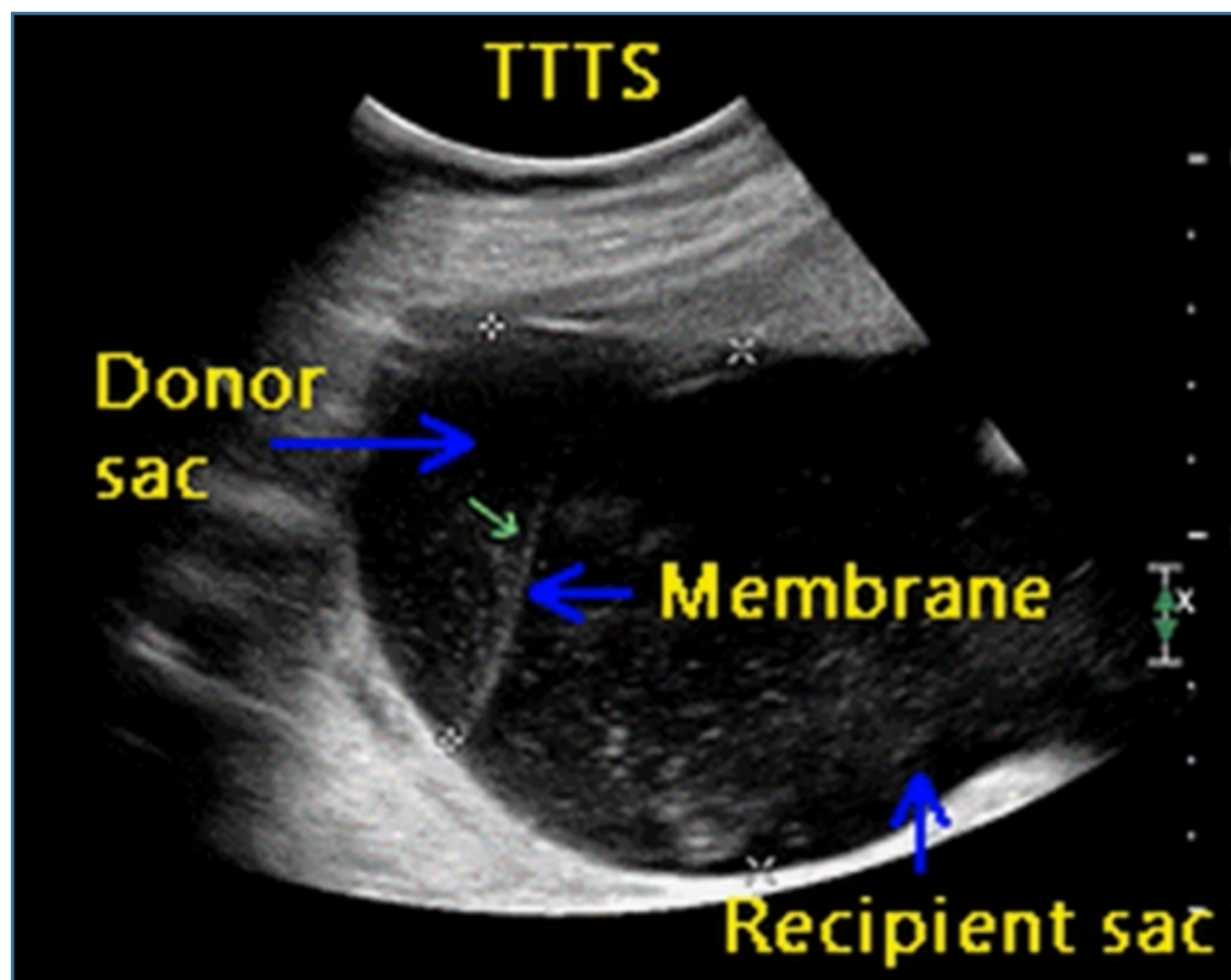






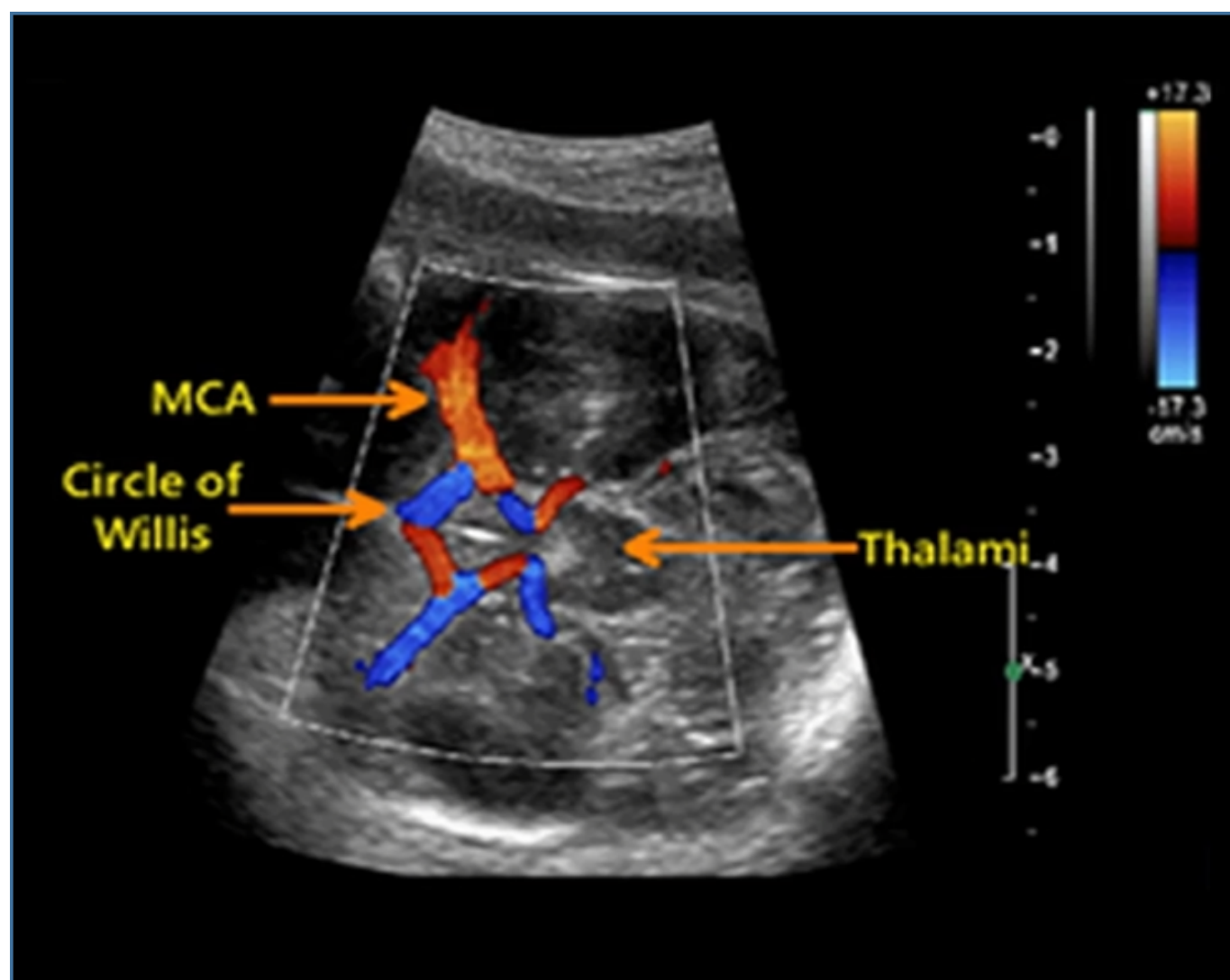
**Videos: Twin Gestations
Normal and Abnormal**

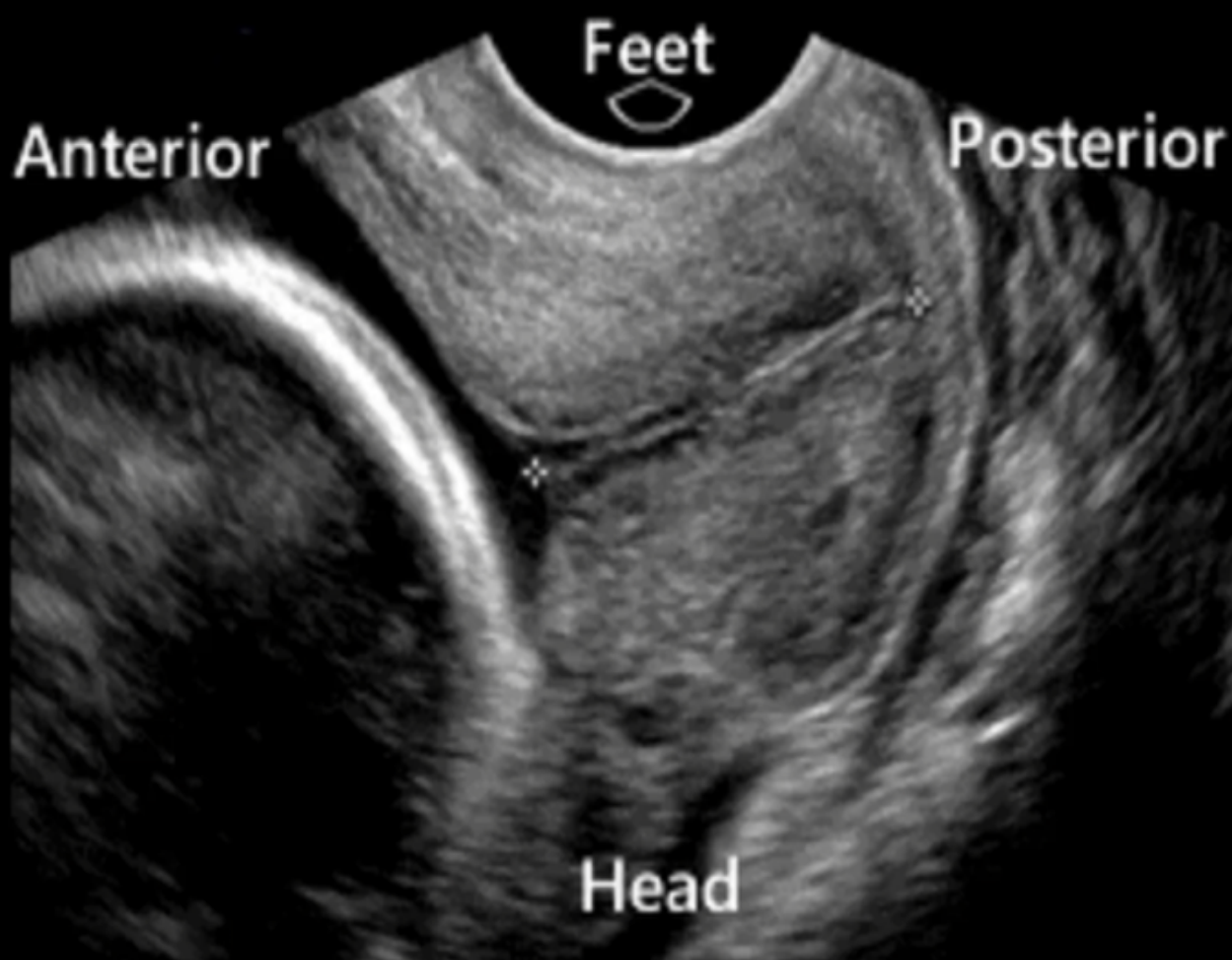




Fetal Doppler Cervical Length

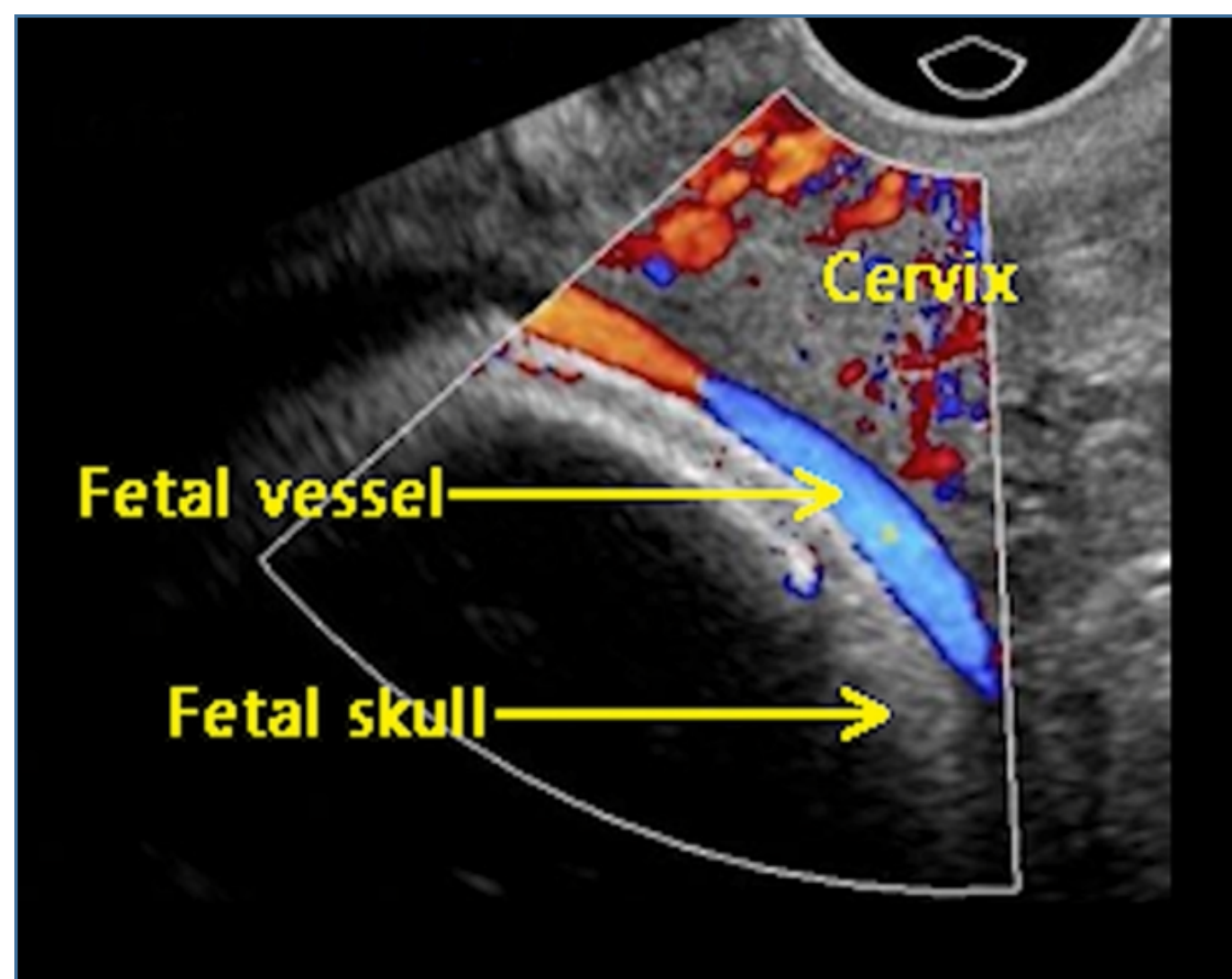


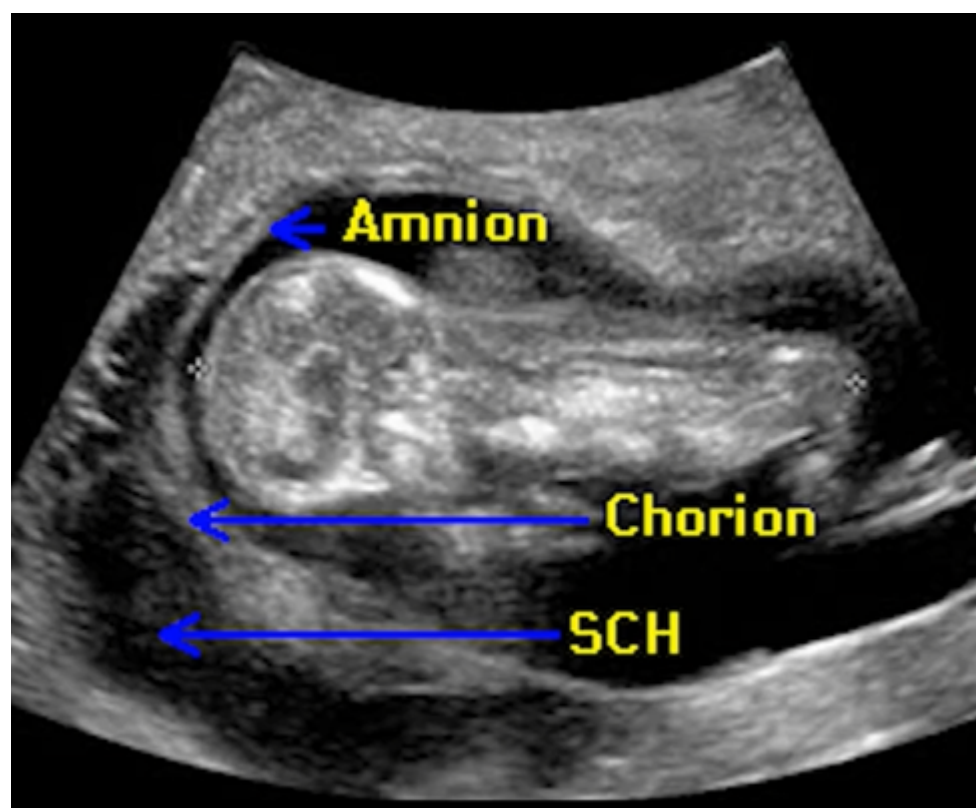




Placental Abnormalities

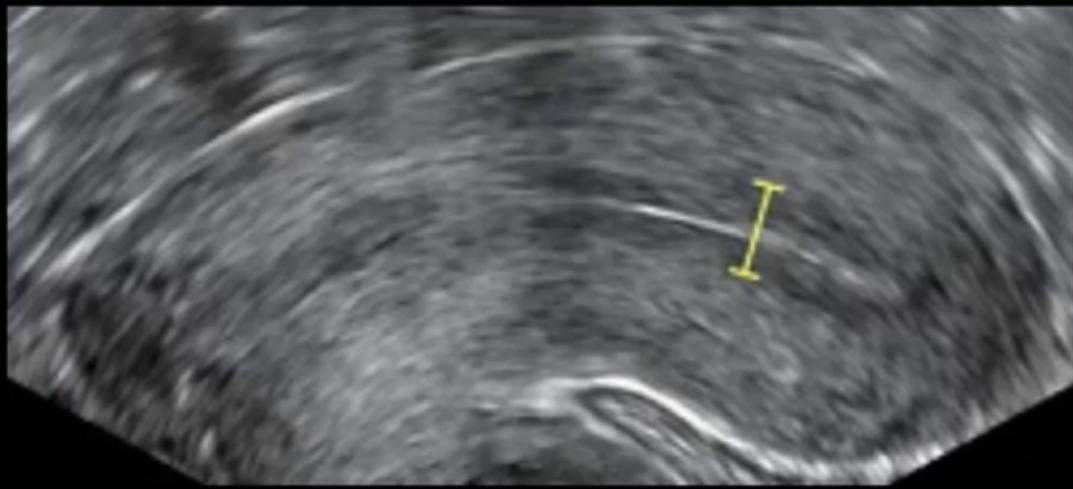




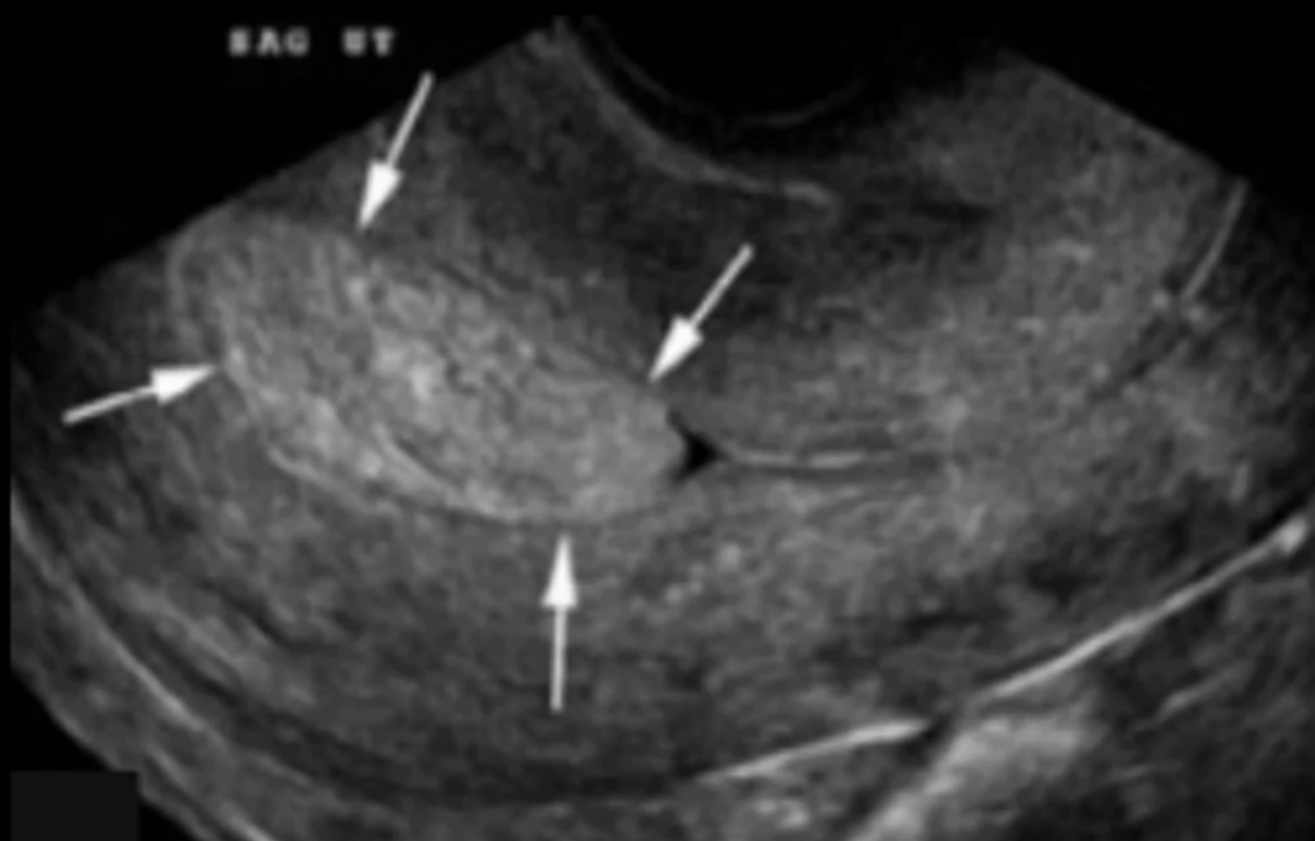


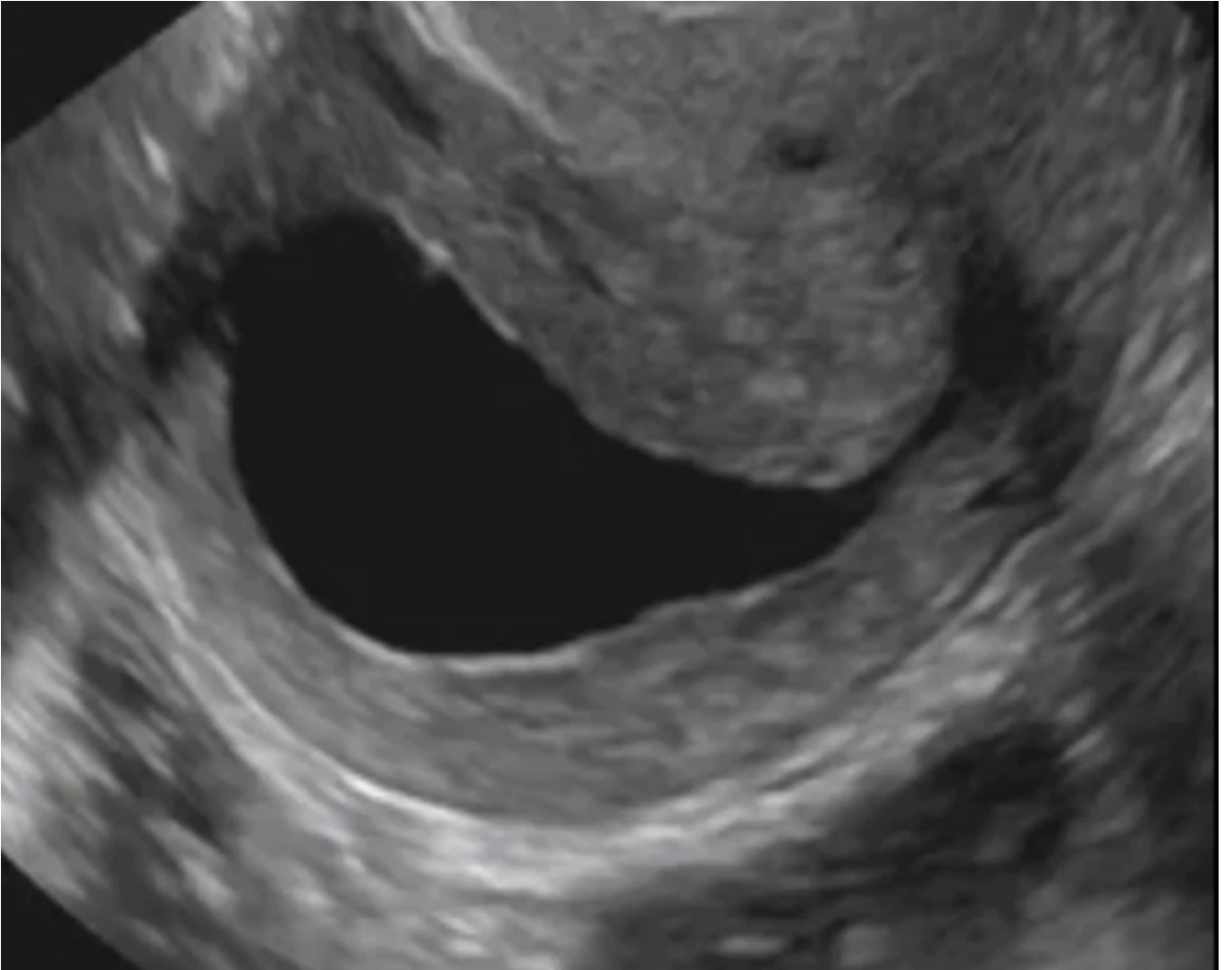
Uterine Myomas Endometrium



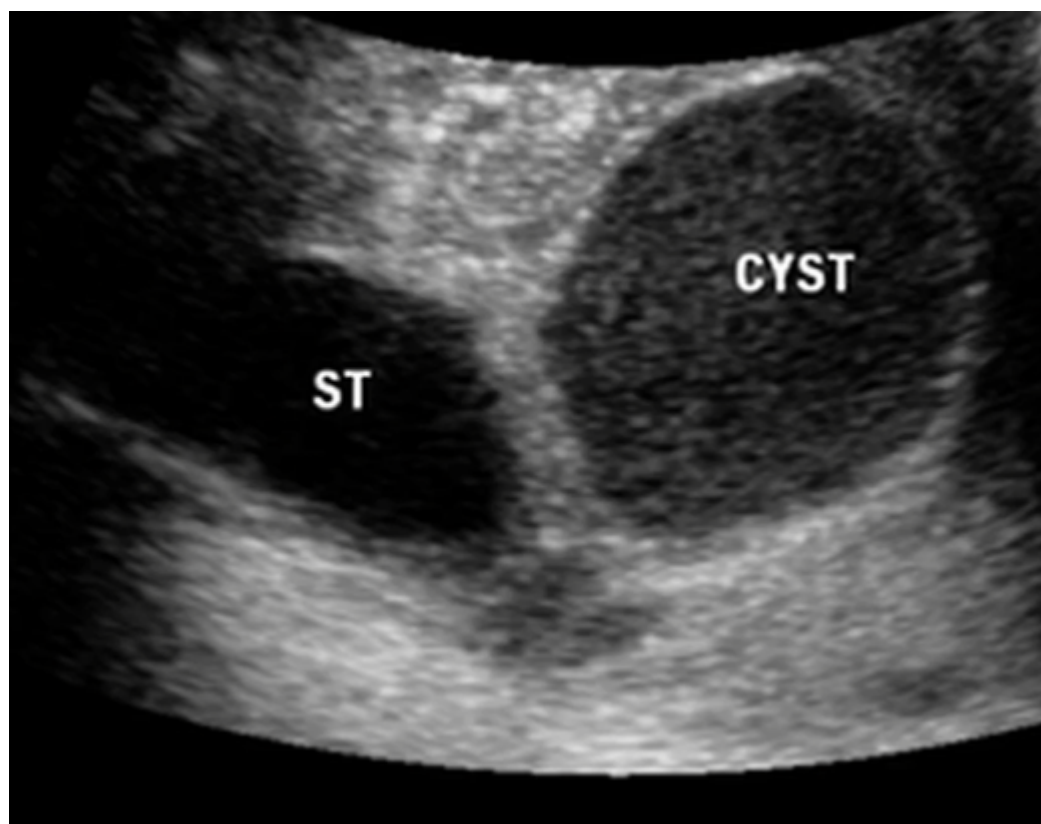


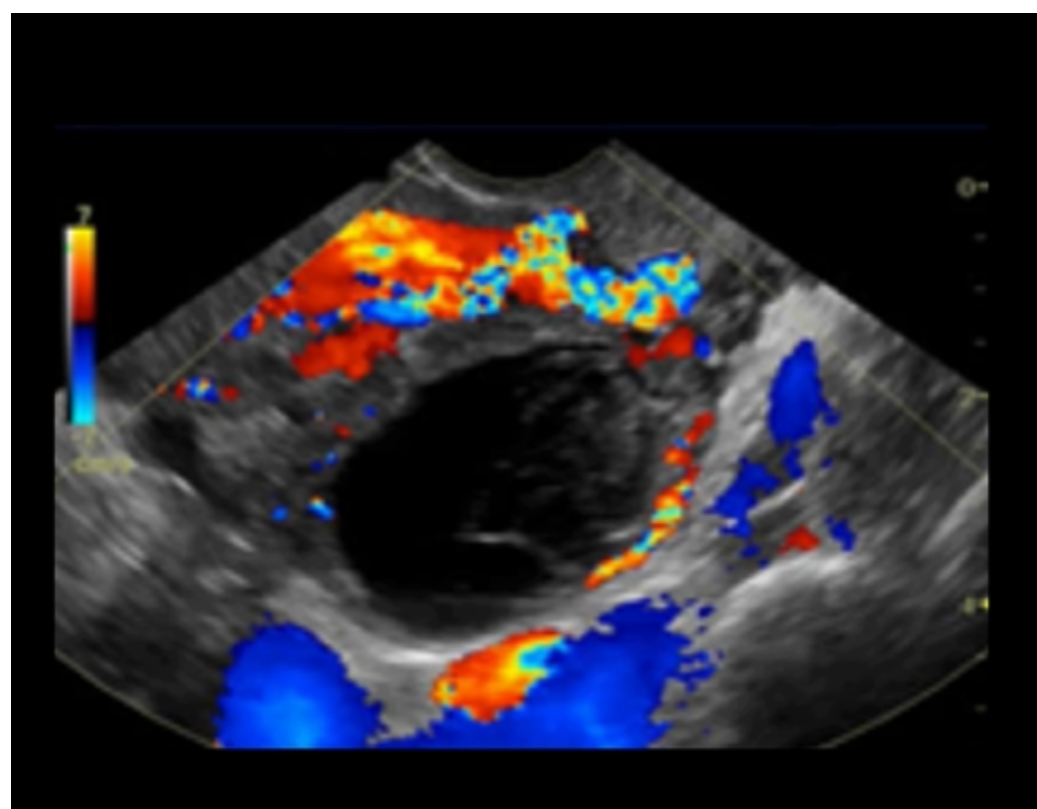
SAG ST





Abnormalities of the Ovary And the Adnexa

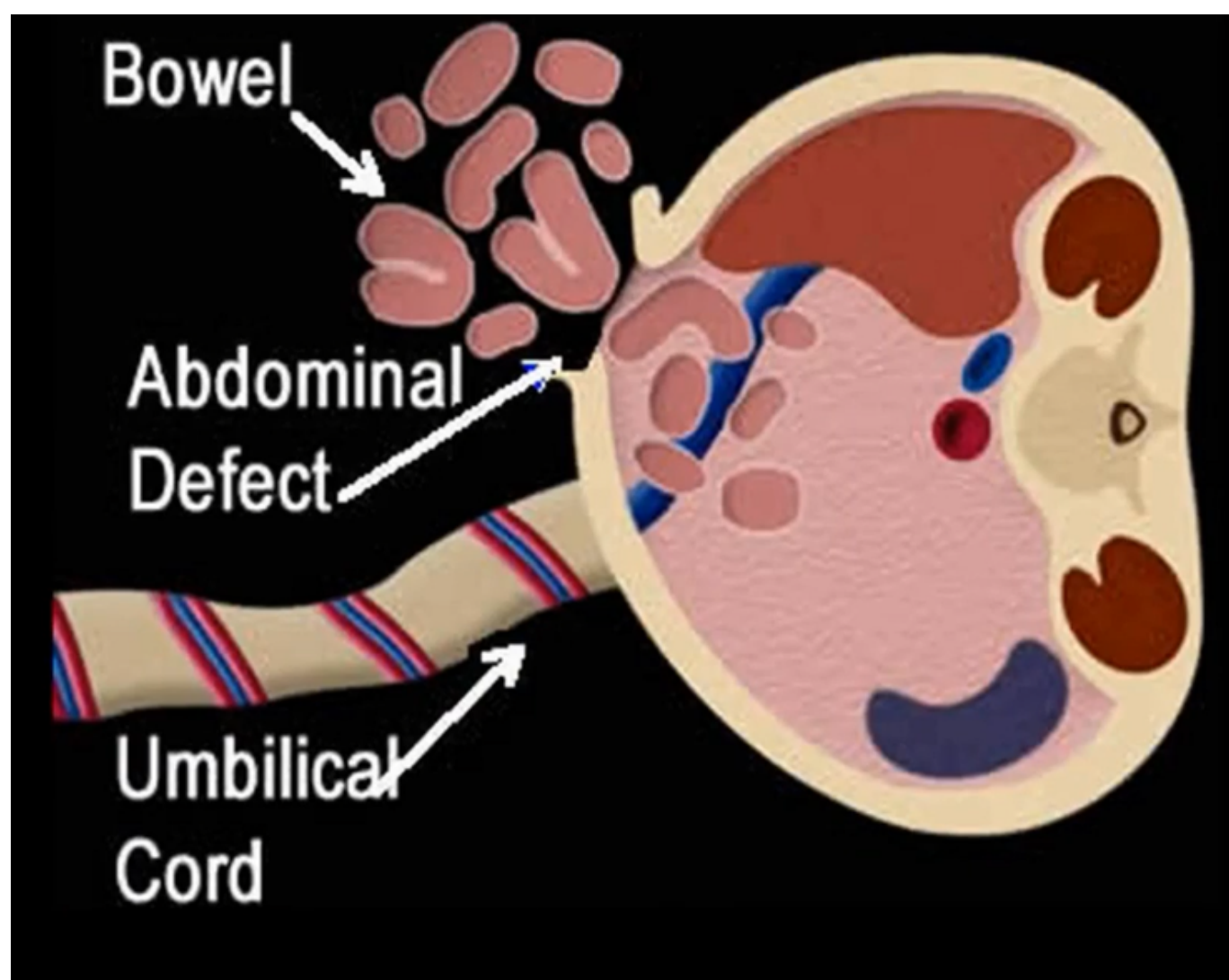


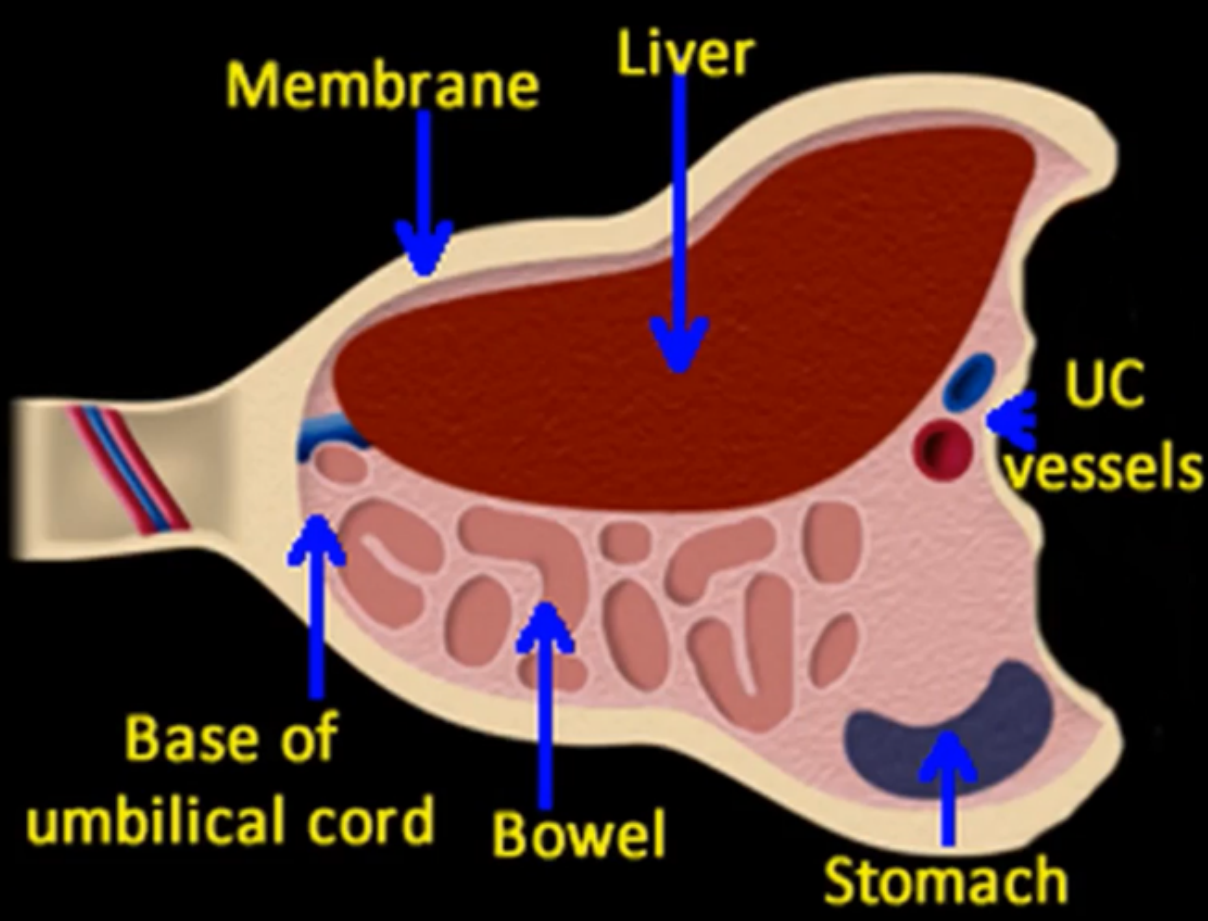


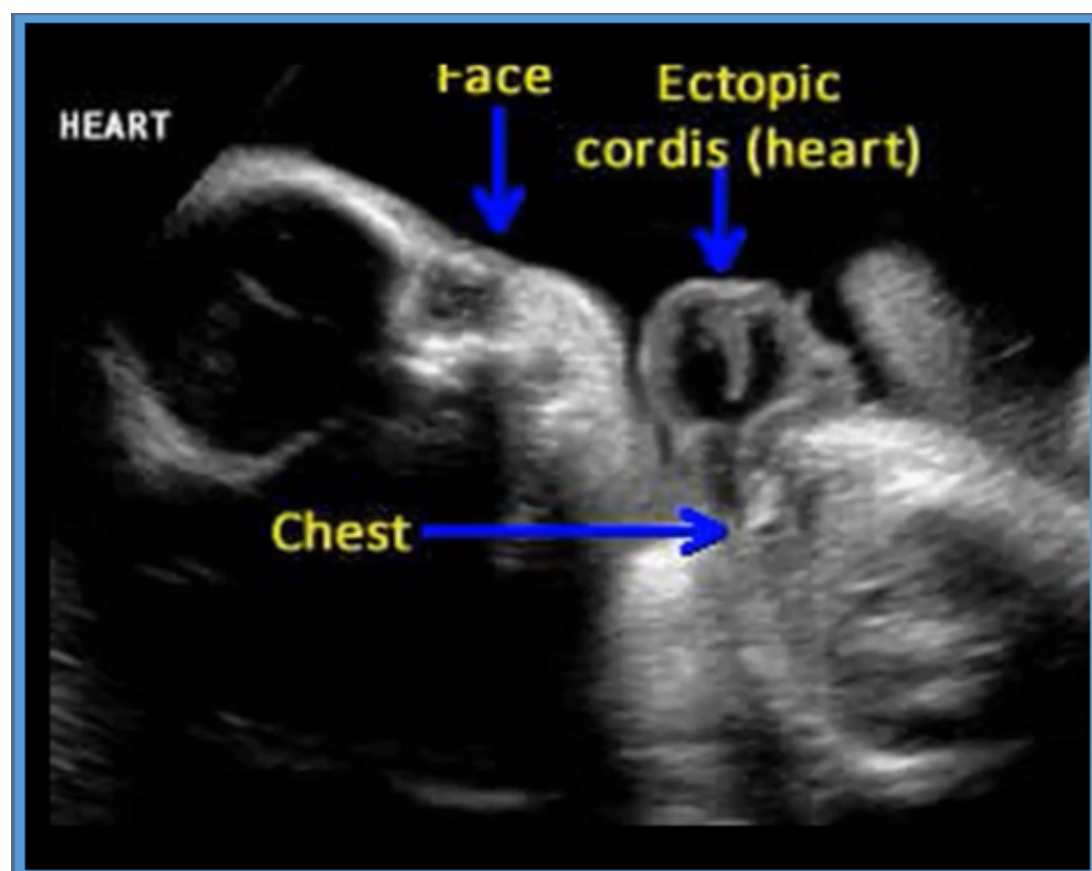




Anterior Abdominal Wall Defects
Gastroschisis
Omphalocele
Pentalogy of Cantrell







Differential Diagnosis: Anterior Abdomen Defects

Omphalocele

Hernia sac at the umbilicus,
covered with membrane,
Ascites, Apical cord
insertion; anomalies,
abnormal karyotype



Gastroschisis

Cord inserts normally,
paraumbilical defect;
Free floating bowel in AF;
No ascites; bowel
complications



Central Nervous System Defects



Meet the Editorial Board for Obimages.net

Each topic on Obimages.net is peer-reviewed by one or more members of our Editorial Board.

Principal Authors, Reviewers, and Contributors to Website and CME Content:

Emanuel P. Gaziano, M.D., Editor, Obimages.net; Board Certification, Obstetrics and Gynecology. Minnesota Perinatal Physicians (Maternal Fetal Medicine Service, Allina Health), Practicing Physician: 1986-2013, Medical Director, Maternal Fetal Medicine Service, Allina Health, 1989-2006; Professor, Department of Ob-Gyn, University of Minnesota, 1994-2013.

Jane K Burns, RDMS, MFM Ultrasound Manager/Women Services

Children's Hospital/Pavilion for Women, Houston, TX.

Krista Wald, AAS/BA, Former Staff Sonographer, Maternal Fetal Medicine Clinics, The Mother Baby Center, Allina Health and Children's Hospitals and Clinics, Minnesota.

Neonatal Medicine

- Ellen Bendel-Stenzel, M.D., Board Certification: Pediatrics, Neonatology
- Bruce Ferrara, M.D., Board Certification: Pediatrics, Neonatology

Pediatric Cardiology

- Christine Hills, M.D., Board Certification: Pediatrics and Pediatric Cardiology, Cardiovascular Unit, Minneapolis Children's Hospitals and Clinics, Minnesota.
- David B. Gremmels, M.D., Board Certification: Pediatrics and Pediatric Cardiology, Cardiovascular Unit, Minneapolis Children's Hospitals and Clinics, Minnesota.

Maternal Fetal Medicine

- Subha Ladella, M.D., Board Certification, Maternal and Fetal Medicine, Associate Professor, University of California San Francisco (UCSF); Medical Director, Maternal Fetal Medicine, Community Regional Medical Center, Clovis, California.
- William Wagner, M.D., Maternal and Fetal Medicine, Former Medical Director, The Mother Baby Center, Allina Health and Children's Hospitals and Clinics, Minneapolis, Minnesota

Contributors to Website and CME Content: Registered Diagnostic Obstetrical Sonographers

- Jill Beithon RT, RDMS, RDCS, RVT, Ultrasound Consultant, former Ultrasound Lead, Sanford Health System, Fargo, North Dakota.

- Nasrin Benion, RDMS, Supervisor, Maternal Fetal Center Imaging, Texas Children's Pavilion for Women, Houston, Texas.
- Dick Mabbs, RDMS, former Instructor, St. Catherine University, Ultrasound Program, High-risk Pregnancy Obstetrical Sonographer at the University of Minnesota Maternal-Fetal Medicine Clinic, Minnesota.
- Paula Wickham, RDMS, Head Sonographer, Maternal Fetal Medicine Clinics, The Mother Baby Center, Allina Health and Children's Hospitals and Clinics, Minnesota.

Staff:

In Memorium, Paul Marion Gaziano, MA, University of Chicago, Research Assistant, and Partner (1971-2019)

In Memorium, G. Eric Knox, M.D. Former Editorial Board Member

Acknowledgments:

Mani Montazemi, RDMS.

George Bega, MD.

John D'Agostino (Graphics).

Related posts:

Video

Free Chapters

CME Access